



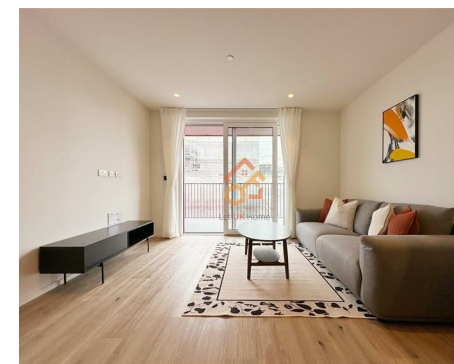
Let **UK** Home

1 Bedrooms

Flat

Located in London

£2,300 Per Month



info@letukhome.co.uk

<https://www.letukhome.co.uk/>

01795 358 886



5 Hemlock Street London

E14 0XW



Let UK Home present this brand new one bedroom property in Bowline House, part of Porter House in the Poplar Riverside development.

This property comprises a large bright open plan kitchen and living room leading to a large private balcony with great views, one double bedroom with wardrobe, a modern bathroom and ample storage. A virtual viewing is provided.

Residents of this exceptional development will have exclusive use of amenities including private outdoor terraces, a cinema, a concierge, a game area, a resident lounge, and shared workspaces (including large co-working suites, bookable meeting rooms, private dining rooms, and bars), offering a variety of living spaces. The riverside spa features a swimming pool, an invigorating massage pool, private treatment rooms, a salt therapy room, and a steam room, allowing residents to enjoy the services while appreciating the riverside scenery.

The property is within walking distance of Langdon Park, All Saints and East India for DLR. Residents of Poplar Riverside only need a short journey to the bustling business district of Canary Wharf, and a bicycle ride to the famous shopping mall in East London - Westfield. Residents can easily reach the commercial high street Bond Street, Heathrow International Airport.

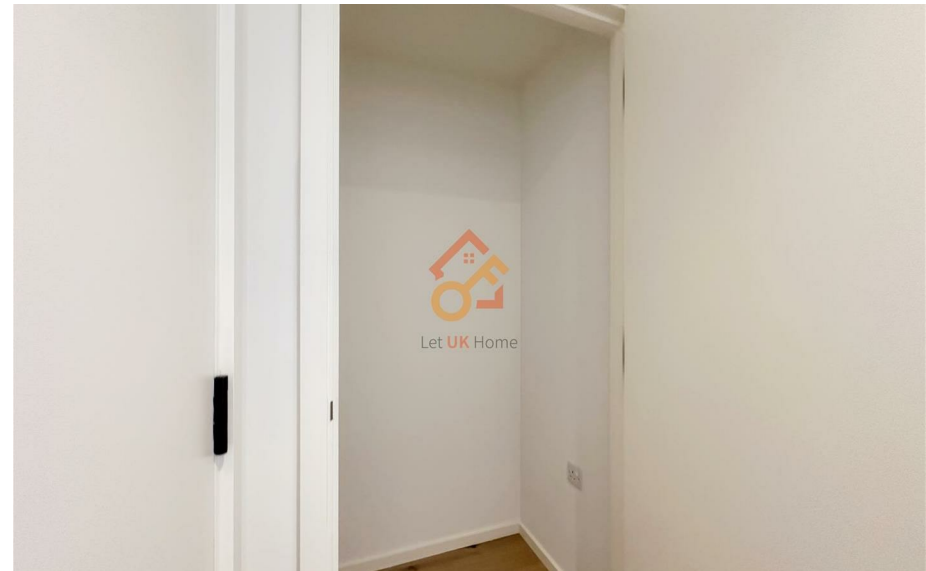
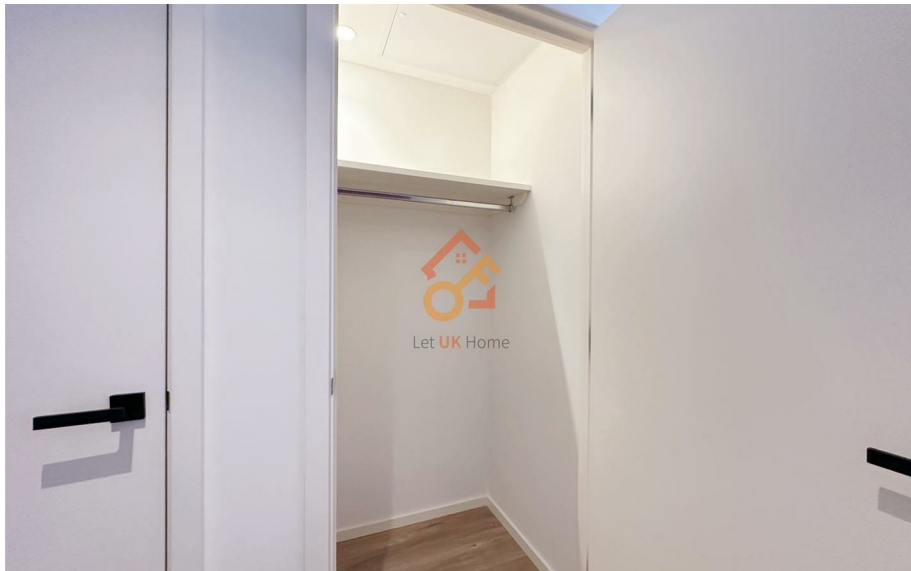
Commuting to school is very convenient, and famous universities in the UK are accessible by subway. For example, starting from Canning Town station, residents can quickly reach the University of Greenwich, Queen Mary University of London, and others.

5 Hemlock Street London

£2,300 Per Month



- 10th Floor
- 24h Security
- Residents Lounge
- Sauna & Steam Room
- Virtual Viewing Available
- Concierge Service
- Swimming Pool & The Spa
- Cinema & Game Room
- Co-working Space
- EPC Rating: B



PORTER HOUSE
THE HERON COLLECTION

ONE BEDROOM

INTERNAL AREAS	50.3 sq m	541 sq ft
EXTERNAL AREAS	7.2 sq m	77 sq ft
KITCHEN/LIVING/DINING	7.18 m x 3.82 m	236 6" x 126 6"
BEDROOM	3.84 m x 3.00 m	126 7" x 98 10"
BALCONY	1.87 m x 3.65 m	58 9" x 118 9"

KEY

- W: FITTED WARDROBE
- U: UTILITY
- S: STORAGE
- DW: DISHWASHER
- C: COAT CUPBOARD
- HU: HEAT INTERFACE UNIT
- WM: WASHING MACHINE
- Optional Customer Upgrade

Photographs shown for Porter House at Poplar Riverside are for approximate measurements only. Exact layouts and sizes may vary. All measurements may vary within a tolerance of 5%. The dimensions are not intended to be used for carpet sizes, appliance sizes or items of furniture. Balcony sizes are subject to manufacturing tolerance.



Let **UK** Home

3F 2 Eastbourne Terrace
Paddington
London
W2 6LG

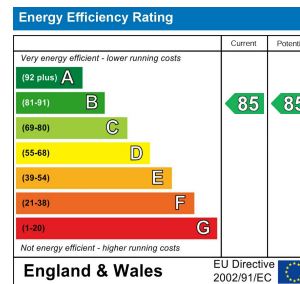
01795 358 886

info@letukhome.co.uk

Council Tax Band: D

Local Authority:

Agents Note: Whilst every care has been taken to prepare these particulars, they are for guidance purposes only. All measurements are approximate and are for general guidance purposes only and whilst every care has been taken to ensure their accuracy, they should not be relied upon and potential buyers/tenants are advised to recheck the measurements.



<https://www.letukhome.co.uk/>